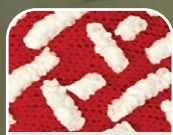


Ultra-Grip

A Quality You Can Always Trust



Double - Tread



Small



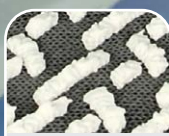
Medium



Large



X-Large



XX-Large



OSFM

Terrycloth Medical Non-Slip Socks

A Cozy Way to Stay Safe



Terrycloth Medical Non-Slip Socks

Ultra-Grip Non-Slip Socks are lightweight and breathable. They feature a grip on the sole to help prevent patient falls, as well as being latex free and washable. Non-Slips socks are designed with two way stretch and is available in a range of size and colours.



Features and Benefits

Double-Tread Socks with Double the Traction, A Cozy Way to Stay Safe

With an innovative tread on the top and bottom, this sock provides a continuous grip for patients even if the sock twists on the foot.

- Easy to slip on and off.
- Colour coding for easy matching on size.
- Supple terrycloth on the inside absorbs perspiration and provides comfort and warmth.
- Slip-resistant tread on the bottom and the top provide a continuous grip to help prevent patient falls.

Washing Instruction

Hand wash in warm, soapy water and hang to dry.

Ordering Information

Product Description	Product Code	GTIN	Size	Color	Packaging
Ultr-Grip Terrycloth Medical Non-Slip Socks Double Tread	127-01 OSFM	9337244005678	One-Size-Fits-Most	Red	1 Pair/pk; 48 Pairs/ctn
	127-01 S	9337244005685	Small	Red	
	127-01 M	9337244005692	Medium	Green	
	127-01 L	9337244005708	Large	Blue	
	127-01 XL	9337244005715	XL	Beige	
	127-01 XXL	9337244005722	XXL	Gray	

Terrycloth Medical Non-Slip Socks Size Conversion Chart *

Shoe Size Conversion Chart	Children				Adult					
	AU Size	US Size	Euro Size	UK Size	AU Size Man	AU Size Woman	US Size Man	US Size Woman	EURO Size Man / Woman	UK Size Man / Woman
127-01 S Small/Red	3 - 5	4 - 6	36 - 38	3 - 5						
127-01 M Medium/Green					4 - 5	6 - 7	5 - 6	6 - 7	37 - 38	4 - 5
127-01 L Large/Navy					6 - 7	8 - 9	7 - 8	8 - 9	39½ - 40½	6 - 7
127-XL X-Large/Beige					7½ - 9	9½ - 11	8½ - 10	9½ - 11	41 - 43	7½ - 9
127-XXL XX-Large/Gray					9½ - 12	11½ - 14	10½ - 13	11½ - 14	44 - 47	9½ - 12

* Guide Only